



# Clubhouse

Major League analytics for college teams





# Problem: Too much data

**Time**



**Budgets**



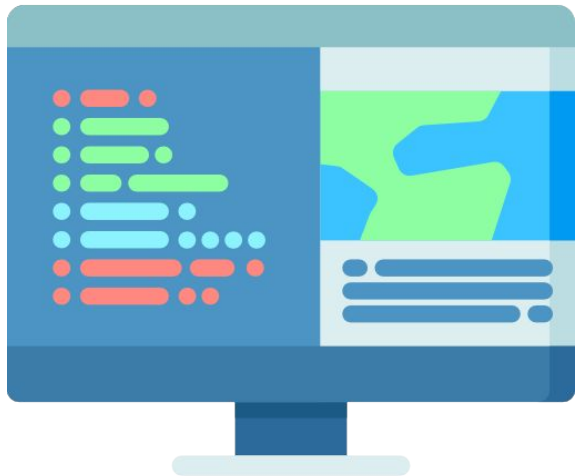
**Complex**



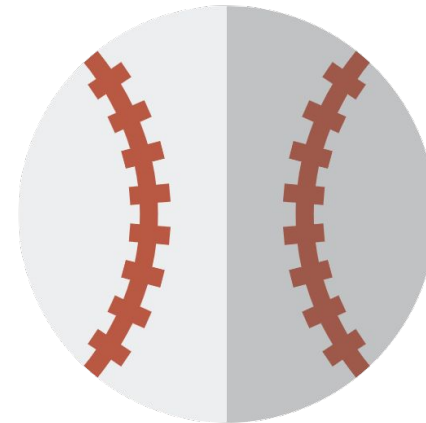
# Solution: Clubhouse

An AI powered platform to make recommendations  
to coaches using

**Machine Learning**



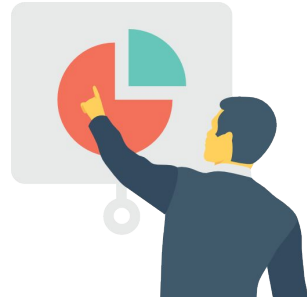
**Sabermetrics**



# How It Works



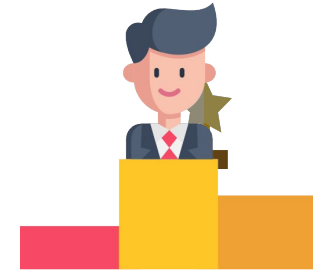
**Organize**



**Analyze**



**Visualize**



**Success!**



# Clubhouse

Analyze. Correct. Perfect.

Username

Password

[Forgot Password?](#)

---

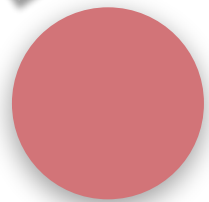
[New User? Create New Account](#)

What exactly are we tapping into?

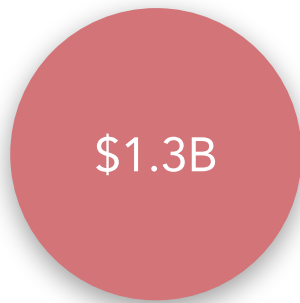
# Market Opportunity

The numbers seem quite a bit high

This slide needs help(?)



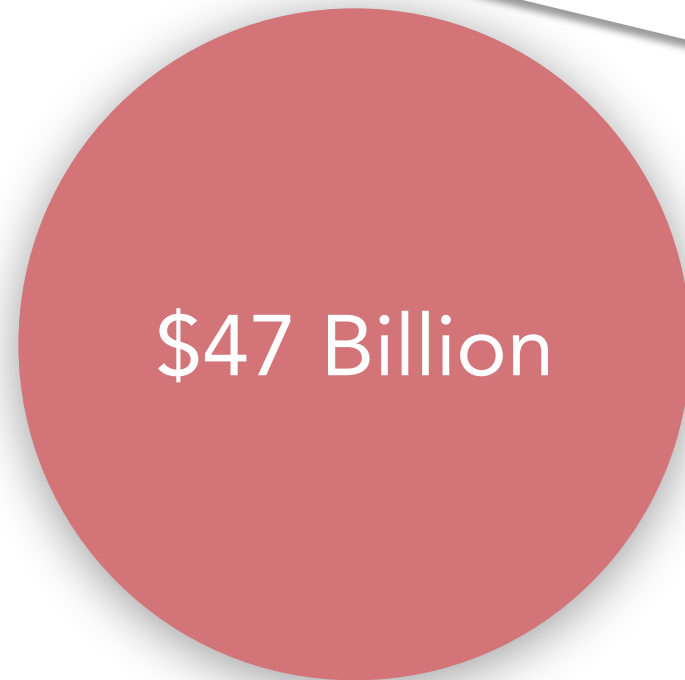
Cal  
Baseball



300 Div. 1  
Baseball Teams



1,600+ Baseball  
U.S. Teams



Sports Analytics  
Market

\$10 Billion

\$47 Billion

\$1.3B








# Business Model

A SaaS company with a subscription based pricing model





# Competition Analysis

	Data Collecting	Data Visualization	Data Storage	Data Analysis
		✓	✓	
	✓	✓		
	✓			✓
	✓	✓	✓	
<i>PITCHGRADER</i>			✓	✓
		✓	✓	
TRACKMAN	✓	✓	✓	

# Competition

Data Collecting

Data Analysis



TRACKMAN

**PITCHGRADER**

**Rapsodo**



**Rapsodo**



Data Storage

Data Visualization

# Clubhouse



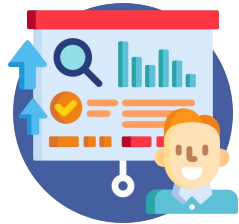
An AI company is only as strong as the data behind it  
We have that data

# Competitive Advantages



## Recommendations

Recommendations for pitching, batting, training, & playing



## Access

To proprietary datasets



## Data-moat

Building data-moat via data co-ops



## Progress

Ability to track players for years



# Next Steps

Start providing  
**services** to Cal  
Baseball

June 2019

**Expand to**  
other college  
sports teams

Feb 2019

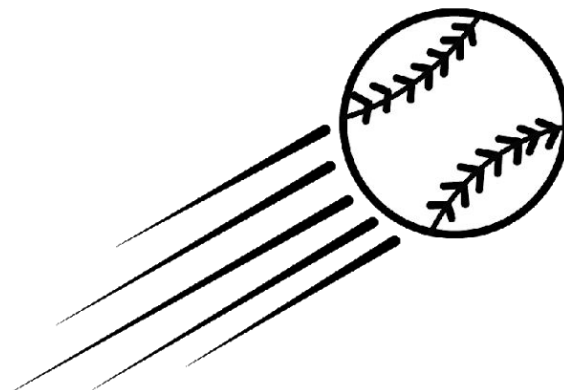
**Target** other  
D1 Baseball  
programs

Oct 2018

Dec 2018

Monitor  
algorithm progress

**Product  
Inception**



# The Team



**Alex Nakagawa**

B.A. Data Science & IEOR  
3+ yrs industry experience



**Charlie Xu**

B.S. Mechanical Engineering  
Cal Football Scouting



**Marcella dePunzio**

B.A. Data Science  
Project Management



**Santhosh Subramanian**

B.A. Applied Mathematics  
Machine Learning



# Advisors



**Sudeep Badjatia**  
IBM  
Chief Architect of Cognitive  
Analytics & Big Data



**Mike Neu**  
Cal Baseball  
Head Coach  
Former MLB Player



**Jesse Smith**  
Seattle Mariners  
Head of Data Analytics

# Thank You!

Contact: [calclubhouse@gmail.com](mailto:calclubhouse@gmail.com)



